

R.R.R.C. NEWSLETTER

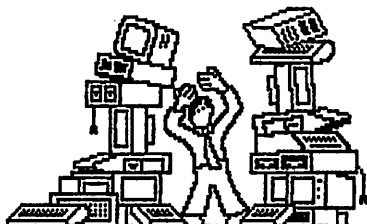
The Rock River Radio Club is one of Wisconsin's oldest radio clubs, being formed in 1931!

JANUARY 1988

MEETING

Tuesday, January 5th is the next meeting, so mark your calendar! The Rock River Radio Club meets at the Dodge County Law Enforcement Center, 141 N. Main in Juneau at 8:00 PM.

RRRC NEWSLETTER INFO



Since this issue of the newsletter is going out to all hams in Dodge County I thought you might like to know a few things about it. The RRRC Newsletter is written, edited and produced by Brad Gehrt, KA9JDE. All RRRC Members, Associate Members and current Juneau Repeater Supporters automatically receive the Newsletter. We also exchange newsletters with several other clubs in Wisconsin. If you would like to receive the RRRC Newsletter, but don't care to be a full member of the RRRC, consider an Associate membership (\$5 per year to cover the cost of copies and postage). Anyone interested in submitting an article for the Newsletter should send it to KA9JDE, P.O. Box 481, Beaver Dam, WI 53916. We also offer a Swap Sheet. If you have any amateur radio related gear you wish to sell, we will list it for free in the Newsletter, however space is limited. Any comments or suggestions regarding the Newsletter should also be sent to KA9JDE. Thanks for your support!

NEW SATELLITE RECEIVER FOR 146.88 IN FOX LAKE!

According to RRRC President Dale Marks, area hams will be pleased to learn that the Baraboo Repeater has been recently upgraded. The upgrade consists of a satellite receiver located on a tower in Fox Lake. If you have an HT or low powered rig, this will make it much easier for you to use the Baraboo machine. When you transmit on the regular input frequency of 146.28, the receiver in Fox Lake will retransmit your signal on 440 MHz to the Baraboo site. You will still hear the signal coming from Baraboo direct because only your transmission is linked on 440.

1988 RRRC OFFICERS

Pres. Dale Marks WB9ADB 485-4234
U. Pres. Duane Haas W9BCV 885-4501
Sec. Beryl Pedersen KA9BAC 386-4446
Treas. Arnie Zietlow KA9FNE 386-4941
Pr.Dir. Al Johnson WB9FMU 887-7706

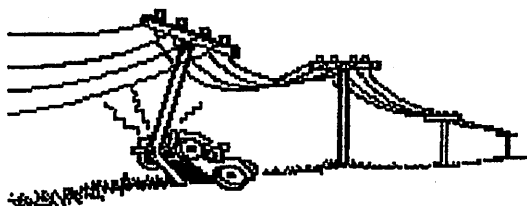


1988 RRRC DUES

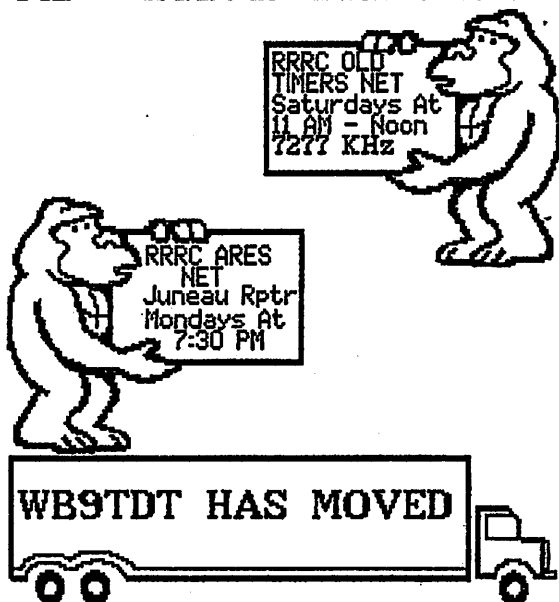
Club Membership is \$10/year.
Family Membership is \$12/year.
Associate Membership is \$5/year.
Send \$\$ to KA9FNE, 155 S. Hyland
Juneau, WI 53039.

REPEATER DONATIONS

Donations of any amount will be gladly accepted for the Juneau Repeater. General autopatch use (non-emergency) requires a \$25 donation. Send your check to our repeater treasurer, WB9KPG, N2298 Resthaven Road, Rubicon, WI 53078.



**In An EMERGENCY
Anyone Can Use The
146.64 Autopatch
911 = Dodge Cty. Sheriff
912 = Beaver Dam Police**



Jay Fadness, WB9TDT, has recently moved to Franksville, Wisconsin. Jay has been a member of the RRRC and is a former club secretary. He has his Tandy 1000 computer set up 24 hours on packet radio. If you are on packet and would like to connect to Jay's station, connect to the NET/ROM WA9KEC by entering "C KEC". Then enter "C WB9TDT U WB9OWN". Jay is using an indoor 5/8 antenna. He asked me to say "Hi" to everyone in the RRRC gang.



WHO WAS AT THE RRRC'S DECEMBER MEETING?

Those present: Roy & Beryl Pedersen (K9FHI/KA9BAC), Brad Gehrt (KA9JDE), Duane Haas (W9BCV), Bob & Gladys Halbman (AJ9P), Bob Dunham (KA9UPD), Redd Benditz (W9IZG), Eli Luster (WB9MKZ), Mike Wilson (SWL), Brian Arntson (SWL), Arnie & Bertha Zietlow (KA9FNE), Dale Marks (WB9ADB) and Carl Guse (KA9BAB).

December Meeting

(editor's note: These minutes have not yet been approved by the RRRC. Bring any corrections to the January meeting.)

The December meeting of the Rock River Radio Club met at the Dodge County Law Enforcement Center at 8 o'clock with 15 persons present. President Dale Marks opened the meeting by asking that the minutes of the previous meeting be accepted as printed in our November Newsletter. They were accepted.

The Treasurer's report gives us a balance of \$361.40. Motions to accept were made by Roy Pedersen and Duane Haas. Motion passed. Dale asked for nominations from the floor with no response and it led Arnie Zietlow & Brad Gehrt to cast a unanimous ballot for next years officers. It passed.

Dale Marks told of the work that the members have done on the repeater with plans for another evening, Dec. 15th, at 7 o'clock. They have cleaned the high voltage amplifier & power supply and moved them up in the cabinet and placed the new repeater in the bottom of the cabinet. They have changed several tubes and ordered a couple of others. It has helped the signal as it can be keyed now on portable. Discussion on the Fox Lake 450 link into Baraboo's 146.88 repeater that's located on the old canning company tower was interesting.

Dale brought his packet radio controller and promised to give us a demonstration later. He wondered if anyone has a weather-fax converter as it would be an interesting program.

Discussion on our Newsletter plan that was previously made with a letter to be sent to all hams in our area to promote new membership, with a motion by Redd Beneditz, seconded by Roy Pedersen to make the mass mailing. Motion passed.

Beryl Pedersen is accepting \$5 subscriptions for the Badger State Smoke Signals. We need 10 to qualify and at the present we need 4 more to qualify for the club discount. It costs \$7.50 ordinarily. Please help, and thanks to those that have!

Members and friends were sad to hear of the death of Les Sack's wife, Esther. Duane called Dick Michel and he is still having therapy several times a week and Gordon Harder is having congestion problems. We miss them! We also miss Teen Norbury that is doing better.

We have a new member, Eli E. Luster, WB9MKZ that brought 2 new interested friends.

Duane Haas & Roy Pedersen moved we adjourn. Redd Beneditz shared a video tape that his son taped from satellite television. Very interesting! Duane Haas took a club picture for us. Thanks! He also brought our lunch.

Signed,

Beryl D. Pedersen, Secretary

Dear Dale,

Greetings from the Rock River Radio Club (RRRC) and the Juneau Repeater Group! We would like to take this opportunity to invite you to renew your RRRC membership and consider donating to the Repeater Fund.

Our records indicate that your RRRC and Juneau Repeater status is as follows: 1987 RRRC Member?: YES 1987 Repeater Contributor?: NO
1988 RRRC Member?: NO 1988 Repeater Contributor?: NO

If this information is incorrect, KA9JDE maintains the group's data base. Write to him at P.O. Box 481, Beaver Dam, WI 53916. Thanks!

Some of the highlights of club activities during 1987 were:

1. Tour of the FAA Radar Site east of Horicon on highway 33.
2. Tour of the John Deere Tractor Plant in Horicon.
3. WPL Representative spoke about safety and lightening protection.
4. UW Madison demonstration of animal and bird tracking by radio.
5. Demonstration of packet radio (computer modem via radio).
6. Provided communications at numerous public events in the area.
7. Sponsored tornado spotting seminars at local fire departments.

The RRRC is the official sponsor of the W9TCH Juneau Repeater, operating on a frequency of 146.64 MHz. Some of the features include autopatch, 911 access to local authorities, and emergency power. Outside of normal use, the repeater is used to provide pertinent severe weather information to the National Weather Service in Milwaukee. Also it can provide backup emergency communications for the Dodge County Emergency Government.

The RRRC meets on the first Tuesday of each month at the Dodge County Sheriff's Department, 141 N. Main in Juneau at 8 PM. The group also publishes a monthly newsletter/swapsheet.

If you would like to be a member of the RRRC for 1988, send your annual dues to KA9FNE, 155 S. Hyland, Juneau, WI 53039.

Individual Membership	\$10
Family Membership	\$12
Associate Membership *	\$5

* Associate members receive the RRRC Newsletter, but can't vote.

If you wish to support the Juneau Repeater, \$25 is the suggested donation (includes complete autopatch privileges). However, donations of any amount are greatly appreciated. Repeater donations should be sent to WB9KPG, N2298 Resthaven Road, Rubicon, WI 53078.

For further information about the RRRC or the Repeater, contact:

Dale Marks WB9ADB	President
Duane Haas W9BCV	Vice President
Beryl Pedersen KA9BAC	Secretary
Arnie Zietlow KA9FNE	Treasurer
Al Johnson WB9FMU	Program Director
Dick Feutz WB9KPG	Repeater Treasurer

License Renewal Information

1) Attach a photocopy, or the original, of your license to the FCC Form 610 (available from ARRL HQ; SASE, please).

2) Mail to FCC, PO Box 1020, Gettysburg, PA 17326. There is no fee.

3) If you file before the license expiration date, you may continue to operate beyond the expiration date and until the new license arrives. After expiration, there is a five-year grace period under which you may still renew without re-

testing. However, after two years of the grace period has elapsed, you will lose your call sign, and will be assigned a new one. After this five-year grace period is over, you must be reexamined for a new license.

4) Note that the new 10-year-term licenses, which have been issued to all amateur licensees renewing since January 1984, have only a two-year grace period before both the license and call sign expire.

5) You may apply to have your license renewed at any time during the term of the

license. FCC suggests the application be made approximately 90 days before expiration.

6) If you are simply modifying your license (change of address, for example), you must fill out a Form 610. Incidentally, your license will also be renewed automatically for 10 years at this time.

7) If you have any questions or problems, drop a note to the Regulatory Information Branch, ARRL HQ.

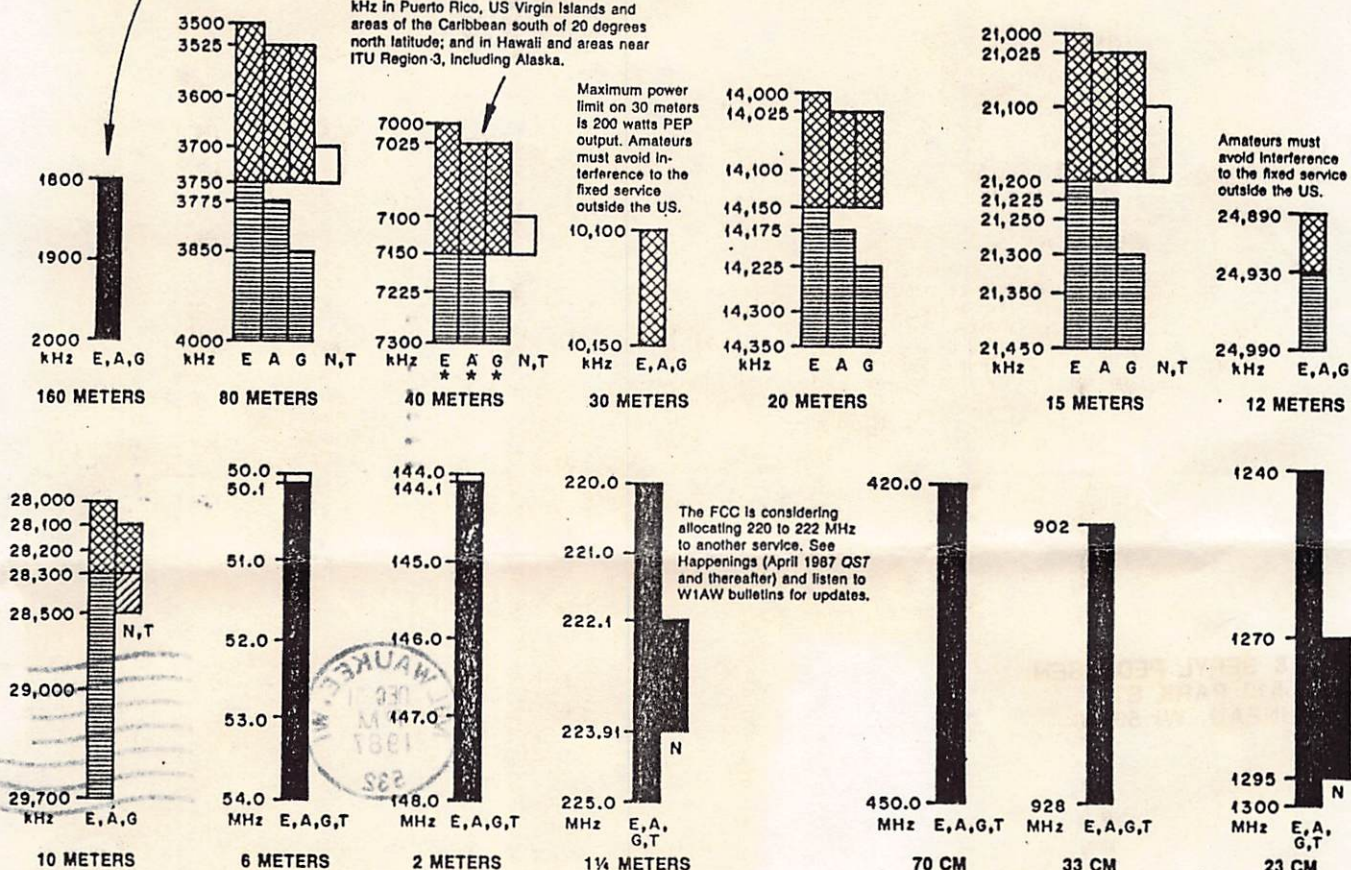
Amateur stations operating at 1900-2000 kHz must not cause harmful interference to the radiolocation service and are afforded no protection from radiolocation operations; see January 1986 Happenings for details.

* Phone operation is allowed on 7075-7100 kHz in Puerto Rico, US Virgin Islands and areas of the Caribbean south of 20 degrees north latitude; and in Hawaii and areas near ITU Region-3, including Alaska.

Maximum power limit on 30 meters is 200 watts PEP output. Amateurs must avoid interference to the fixed service outside the US.

US AMATEUR BANDS

(Effective 0001Z, March 21, 1987)



Operators with Technician class licenses and above may operate on all amateur bands above 50 MHz. For more detailed information see *The FCC Rule Book*.

KEY

- = CW ONLY
- ▤ = CW AND RTTY
- ▥ = CW, VOICE, SSTV AND FAX
- = CW, VOICE, SSTV, FAX AND RTTY
- ▨ = CW AND SSB
- E = EXTRA
- A = ADVANCED
- G = GENERAL
- T = TECHNICIAN
- N = NOVICE

US AMATEUR POWER LIMITS

At all times, transmitter power should be kept down to that necessary to carry out the desired communications. Power is rated in watts PEP output. Unless otherwise stated, the maximum power output is 1500 W. Power for all license classes is limited to 200 W in the 10,100-10,150 kHz band and in all Novice subbands below 28,100 kHz. Novices and Technicians are restricted to 200 W in the 28,100-28,500 kHz subband. In addition, Novices are restricted to 25 W in the 222.1-223.91 MHz subband and 5 W in the 1270-1295 MHz subband.

(Effective 0001Z, March 21, 1987)

5167.5 kHz Alaska emergency use only (SSB only) E, A, G, T, N